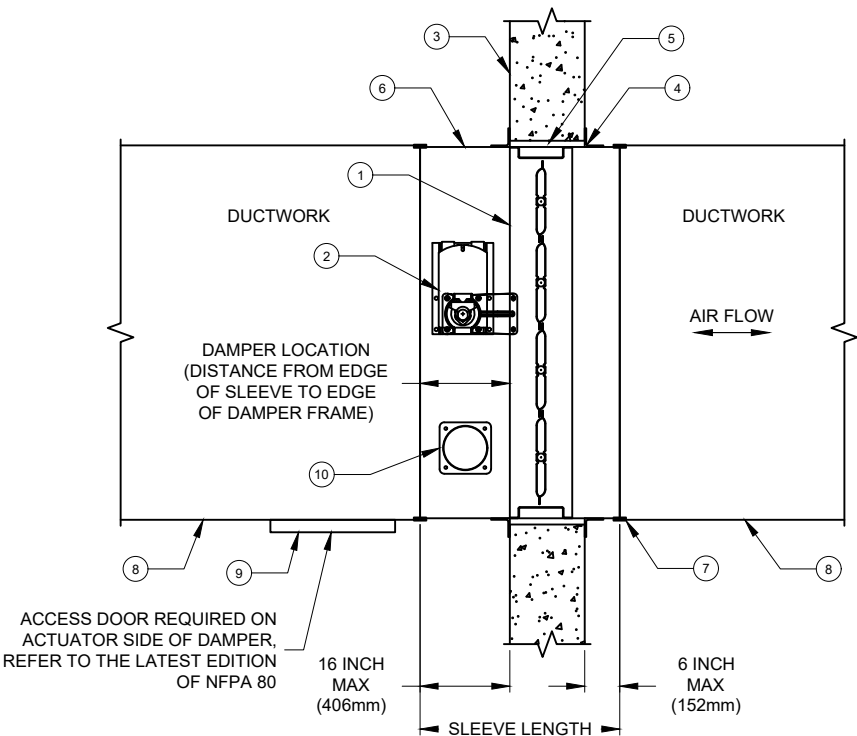



REVISION	SYM
MARKETING NOTE UPDATES (7) , COPYRIGHT NOTE	1



- ITEM:
1. UL CLASSIFIED AS BOTH A FIRE DAMPER AND A LEAKAGE RATED SMOKE DAMPER
 2. UL QUALIFIED DAMPER/ACTUATOR ASSEMBLY (ELECTRIC)
 3. RATED BARRIER
 4. RETAINING ANGLES
 5. EXPANSION CLEARANCE
 6. DAMPER SLEEVE
 7. BREAKAWAY JOINT
 8. STEEL DUCT
 9. ACCESS DOOR
 10. UL LISTED HEAT RESPONSIVE DEVICE (RRL, RRL/OCI, TOR)
- NOTE:
1. DAMPERS SHALL BE CONSTRUCTED, TESTED, LABELED AND INSTALLED IN ACCORDANCE WITH UL555, UL555S, NFPA 80, NFPA 90A, NFPA 92, NFPA 101 AND NFPA 105.
 2. DAMPER RATING SHALL MEET THE REQUIREMENTS OF INTERNATIONAL BUILDING CODE (IBC) AND COMPLY WITH LOCAL CODE REQUIREMENTS.
 - 2.1. DAMPERS SHALL BE RATED FOR VERTICAL OR HORIZONTAL MOUNTING AS REQUIRED AND SHOWN ON PROJECT PLANS.
 3. DAMPER OPENING (EXPANSION GAPS) SHALL BE PER DAMPER MANUFACTURER'S UL APPROVED INSTALLATION INSTRUCTIONS.
 - 3.1. MAXIMUM DAMPER OPENING MAY NOT EXCEED THE DAMPER MANUFACTURER'S MAXIMUM UL LISTED SIZE.
 4. SLEEVE GAUGE, TERMINATIONS AND RETAINING ANGLES SHALL BE AS REQUIRED AND COMPLY WITH UL AND SMACNA REQUIREMENTS.
 5. HEAT RESPONSIVE DEVICE SHALL BE A SINGLE TEMPERATURE ELECTRIC HEAT SENSOR OR DUAL TEMPERATURE OVERRIDE SENSOR. CHECK PROJECT SPECIFIC REQUIREMENTS AND SPECIFICATIONS FOR TYPE AND TEMPERATURE RATINGS.
 6. ACCESS DOORS SHALL BE PROVIDED FOR INSPECTION, TESTING AND MAINTENANCE TO COMPLY WITH NFPA 80.
 7. BASIS OF DESIGN SHALL BE GREENHECK FSD-311 1-1/2 HOUR RATED STEEL AIRFOIL BLADE COMBINATION FIRE SMOKE DAMPER. (Alternate models: FSD-312 1-1/2 hour rated; FSD-311M 1-1/2 hour rated modulating; FSD-331 3 hour rated)
 8. FSD-311 MAY BE MOUNTED EITHER HORIZONTALLY OR VERTICALLY. BLADE AXIS MUST REMAIN HORIZONTAL.

Copyright © 2024 Greenheck Fan Corporation

Greenheck Fan Coporation reserves the right to make product changes without notice

PAINT	PART NO.	MAT'L	GAUGE	DESCRIPTION	
 GREENHECK		DRAWN BY		ECN	
		DATE		ENG. REF.	
		05/23/2025			
		SUPERSEDES			
TITLE FSD,VERTICAL MOUNT,INSTALL DETAIL				SCALE	
				1/8	
				CAD DRAWING NO.	
				100551107	